

# CONFERENCE INVITATION



## WELL-BEING RESIDENCY THINK TANK

---

### THE HEALING POWER OF ART

Luleå, SWEDEN  
September 18th, 2018

---

A CONFERENCE ON HOW ARTISTS  
CAN CONTRIBUTE TO SOCIAL AND  
HEALTH CARE

[WWW.PISTERY.ORG/WBRTT/ENG](http://WWW.PISTERY.ORG/WBRTT/ENG)  
#wbrrt  
#nordiskkulturkontakt

### CONFERENCE

How can art and culture promote health and well-being? What does a social art residency look like? How can artists work in prisons, elderly care, hospitals or other non-traditional environments?

Welcome to a conference where you can explore and discuss the prerequisites for an art residency, from your professional point of view. The conference is meant for artists as well as anyone working with the aforementioned topics.

### ► SIGN UP

Email the following information to [hanna.isaksson@norrboten.se](mailto:hanna.isaksson@norrboten.se)

- 1) name
- 2) organisation
- 3) special dietary requirements

### PROGRAMME

Tuesday, September 18th  
9:30-16:00

Loftet, Norrbottensteatern  
Luleå, Sweden

The programme will be conducted in English. The workshop will be conducted in English and Swedish.

The conference is free of charge and we offer lunch and coffee. Note, that the registration is binding: if you fail to attend the conference after registering, you will be charged a fee of 300 kr.



FINLAND  
Monitaide-  
yhdistys Piste  
project coordinator



LATVIA  
VSIA Rigas Cirks  
Sansusi



RUSSIA  
Sortavala Social  
and Youth Center



SWEDEN  
Art North  
Swedish Lapland  
AiR

# CONFERENCE INVITATION



## WELL-BEING RESIDENCY THINK TANK

### THE HEALING POWER OF ART

Luleå, SWEDEN  
September 18th, 2018

A CONFERENCE ON HOW ARTISTS  
CAN CONTRIBUTE TO SOCIAL AND  
HEALTH CARE

[WWW.PISTERY.ORG/WBRTT/ENG](http://WWW.PISTERY.ORG/WBRTT/ENG)  
#wbrrt  
#nordiskkulturkontakt

### PROGRAMME

**Tuesday, September 18th**  
**9:30-16:00**

Loftet, Norrbottensteatern  
Luleå, Sweden

#### 9.30 Coffee and registration

#### 10.00 - 10.15 Introduction to the conference day and the WbRTT project

*Hanna Harila, Region Norrbotten and  
Hanna Isaksson, Art North*

#### 10.15 - 11.00 Art in prison in Umeå

*Gerd Aurell, Teacher of free art at  
Umeå Academy of Fine Arts. Founder of  
Verkligheten i Umeå.*

The Public Art Agency Sweden and the Umeå prison commissioned Gerd Aurell to create an artwork which was to be located at the prison's common area. Aurell chose to work with the inmates' own stories. Based on interviews with the inmates, she created large drawings on the walls of a corridor that the inmates pass every day. The work

includes a separate publication with inmates' stories that are meant to be read aloud in the common area. Gerd Aurell will share her experiences of working in a closed environment - a world within a world.

<http://gerdaurell.se/>

#### 11.00 - 11.45 Re:Sound - Artist-in-residence at the rehab clinic in Ängelholm Hospital

*Stefan Klaverdal, Musician and Sound Artist*

Stefan Klaverdal worked as an artist-in-residence at Ängelholms rehabilitation clinic for six months in order to investigate how art and music can influence and improve health care. During his stay he created several new works which he performed around the hospital premises. Among other things, he composed relaxation music for physical therapy and created a sound installation with birdsong for one of the care units. Stefan will share his experiences from the residency at Ängelholms hospital.

<http://www.stefanklaverdal.com/>



FINLAND  
Monitaide-  
yhdistys Piste  
project coordinator



LATVIA  
VSIA Rigas Cirks  
Sansusi



RUSSIA  
Sortavala Social  
and Youth Center



SWEDEN  
Art North  
Swedish Lapland  
AiR

# CONFERENCE INVITATION



## WELL-BEING RESIDENCY THINK TANK

### THE HEALING POWER OF ART

Luleå, SWEDEN  
September 18th, 2018

A CONFERENCE ON HOW ARTISTS  
CAN CONTRIBUTE TO SOCIAL AND  
HEALTH CARE

WWW.PISTERY.ORG/WBRTT/ENG  
#wbrrt  
#nordiskkulturkontakt

### PROGRAMME (cont.)

**11.45 - 12.00 A short introduction to  
Norrbottensteatern**

**12.00 - 13.00 Lunch at Bistro Norrland  
(included)**

**13.00 - 13.45 The artist who got admit-  
ted to psych**

*Marie Bondeson, Artist*

In 2015 the headlines told the story of "an artist who got admitted to psych". This artist was Marie Bondeson. While admitted, she investigated the psychosis ward by assuming different roles, such as a nurse or a curator, but also as a patient. The idea was to collect material for a design project for under-construction spaces in the hospital. Unfortunately, the work was never finalized, although a publication was released. Marie will share her experiences of the obstacles one can run into while working in such a closed environment, but also the opportunities for creating change. <http://www.mariebondeson.se/>

**13.45 - 14.30 Creating an artistic  
method**

*Lasse Lundqvist, Artist*

Lasse Lundqvist has a long experience of working in artistic projects with marginalized groups. In the three-year project "Skaparkraft" ("Creation strength"), funded by The State Inheritance Fund, [http://margitschiott.se/?page\\_id=7](http://margitschiott.se/?page_id=7) together with Sound Artist Margit Schiött he created a method for artistic work with refugees and young people with disabilities. The method became a success and has since been used with a variety of groups, for example with older people with dementia. Lasse will introduce us to the method and the projects that he has worked with.

**14.30 - 14.45 Coffee break**

**14.45 - 15.45 Workshop: How can we  
develop well-being residencies in Norr-  
botten?**

*What are the challenges and the oppor-  
tunities?*

**15.45 - 16.00 Round up and next steps**



FINLAND  
Monitaide-  
yhdistys Piste  
project coordinator



LATVIA  
VSIA Rigas Cirks  
Sansusi



RUSSIA  
Sortavala Social  
and Youth Center



SWEDEN  
Art North  
Swedish Lapland  
AiR

# CONFERENCE INVITATION



## WELL-BEING RESIDENCY THINK TANK

### THE HEALING POWER OF ART

Luleå, SWEDEN  
September 18th, 2018

A CONFERENCE ON HOW ARTISTS  
CAN CONTRIBUTE TO SOCIAL AND  
HEALTH CARE

[WWW.PISTERY.ORG/WBRTT/ENG](http://WWW.PISTERY.ORG/WBRTT/ENG)  
#wbrrt  
#nordiskkulturkontakt

### BACKGROUND

Well-being Residency Think Tank is an international project that brings together professions, experiences and know-how with the aim of investigating the role of an artist in non-traditional settings such as social and health care. The aim is to create new collaboration models that can give birth to new art residencies.

#### *Project partners*

FINLAND

Monitaideyhdistys Piste (project co-ordinator)

LATVIA

VSIA Rigas Cirks and Sansusi

RUSSIA

Sortavala Social and Youth Center

SWEDEN

Art North and Swedish Lapland AiR

#### *Website*

[www.pistery.org/wbrrt/eng](http://www.pistery.org/wbrrt/eng)

#### *Organizers*

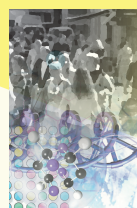
Art North and Region Norrbottens  
Culture and Health Strategist



Resurscentrum  
Norrbotten **KONST**



Taiteen edistämiskeskus  
Centret för konstfrämjande  
Arts Promotion Centre Finland



NORDIC-BALTIC  
MOBILITY  
PROGRAMME

Culture



FINLAND  
Monitaide-  
yhdistys Piste  
project coordinator



LATVIA  
VSIA Rigas Cirks  
Sansusi



RUSSIA  
Sortavala Social  
and Youth Center



SWEDEN  
Art North  
Swedish Lapland  
AiR